



Genero®
report writer

INSTALLING AND LICENSING

Using Genero Report Writer
GRS 3.00

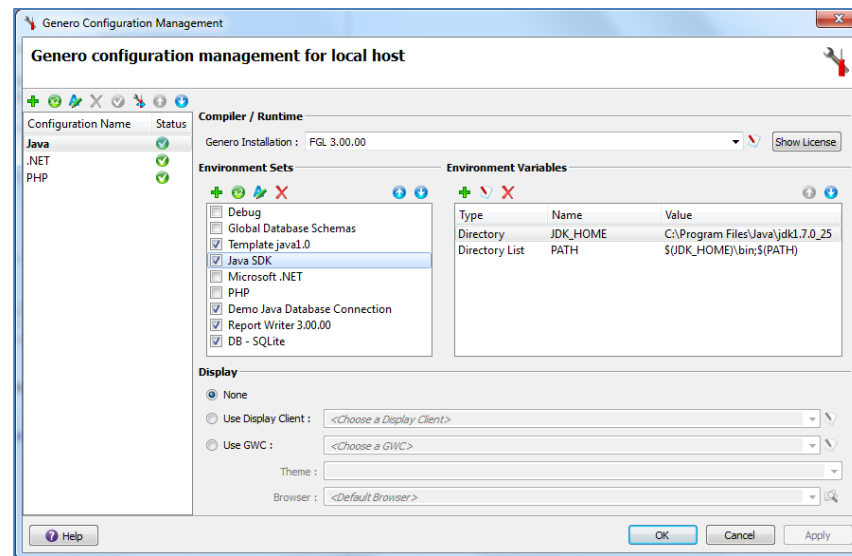
After this instruction, you will be able to:

- Install the components that make up Genero Report Writer
- License Genero Report Writer

Various options:

- Development components
 - Install the complete suite with the Genero Report Studio installation bundle (GRS)
- Runtime components
 - Install the individual components
 - Genero Report Designer
 - Genero Report Engine
 - Genero Desktop Client (for Genero Report Viewer)

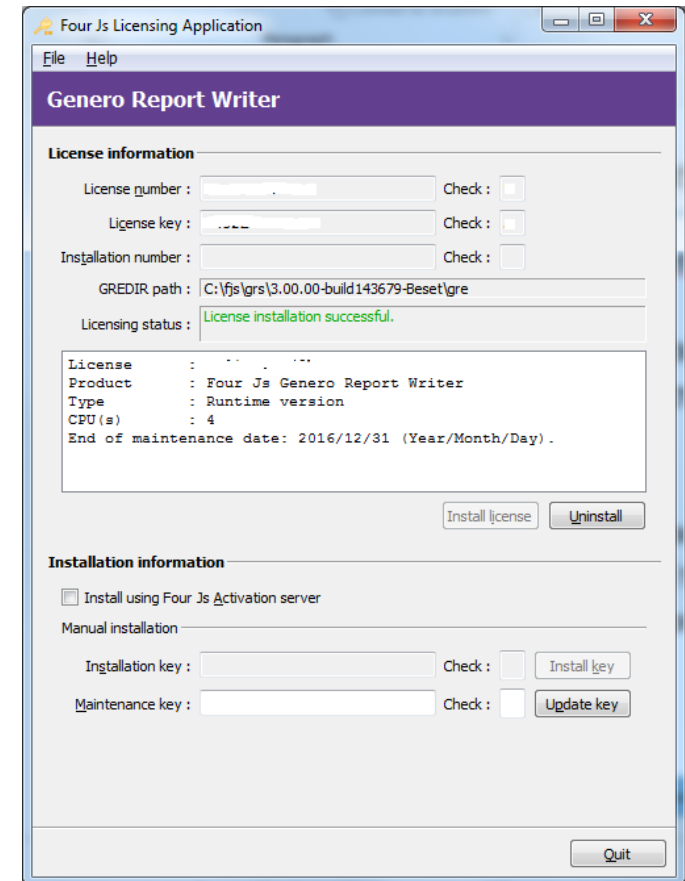
- Ensure Java Development Kit (JDK) is installed
 - Last version 1.7 is recommended
- Download the appropriate Genero Report Studio (GRS) for your server
- Follow standard Four J's installation processes for the Genero Report Studio
- Check the appropriate environment sets



Installing GRW (Runtime environment)

- Ensure Java Runtime Environment (JRE) is installed
 - Last version 1.7 is recommended
- Download the appropriate Genero Report Engine (GRE) for your server
- Download the appropriate Genero Report Designer (GRD)
- Follow standard Four J's installation processes for both products
- Set the environment
 - Set Java environment
 - Set GREDIR to GRE installation directory
 - Set CLASSPATH to hold gre.jar
 - Set appropriate DB environment

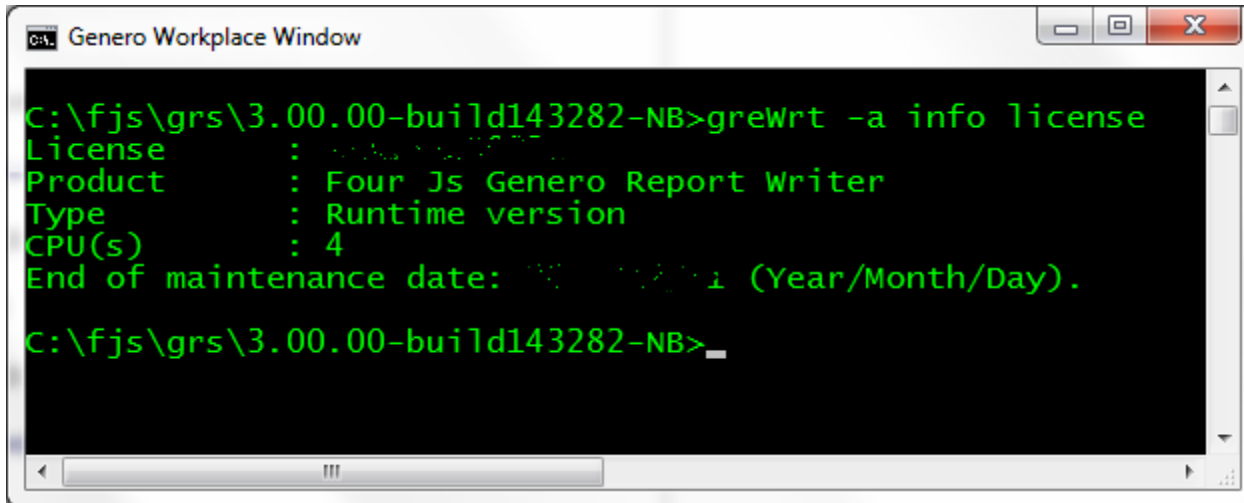
- You have to license Genero Report Engine
 - License Number (ex: F4Z#X34006TG)
 - License Key (ex: GFAS9FD78XDT)
 - Maintenance Key (ex: 1A2B3C4D5E6F)
- Use the command line tool ‘greWrt’ or the **graphical tool** ‘Genero Report Engine for Java Licenser’



From the command line:

- `greWrt -l`
 - to license the product
 - You are prompted for license number and key
 - An installation number is generated
- `greWrt -k installation-key`
 - to register the product
 - You have 30 days to provide the installation key
- `greWrt -a info license`
 - to display the current license number
- `greWrt -d`
 - to drop an existing license

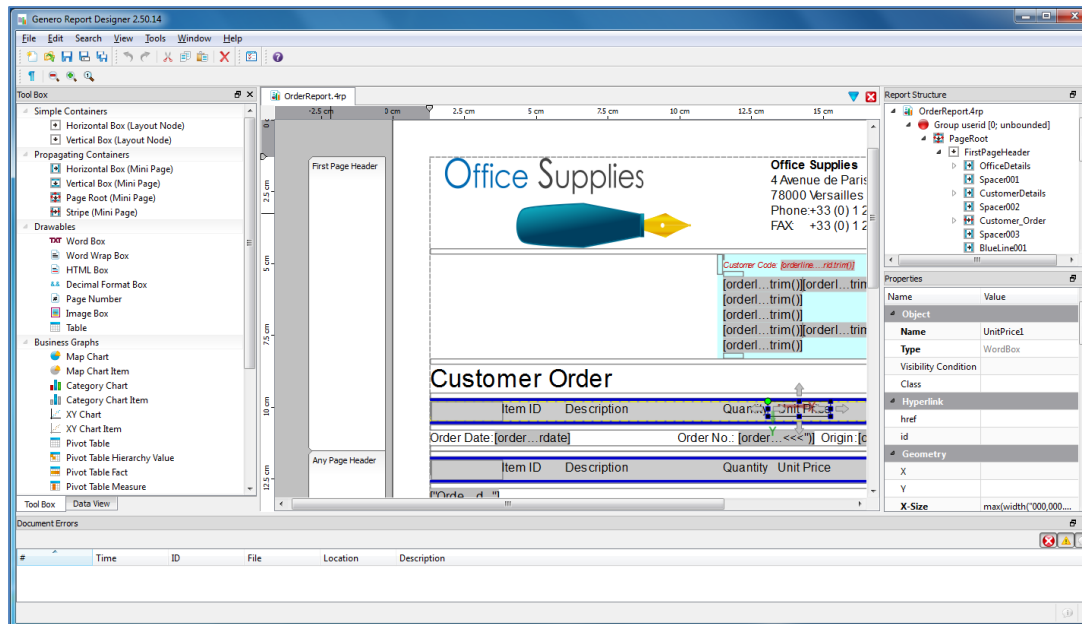
- If GRE is appropriately licensed, no special additional licensing requirements at installation time



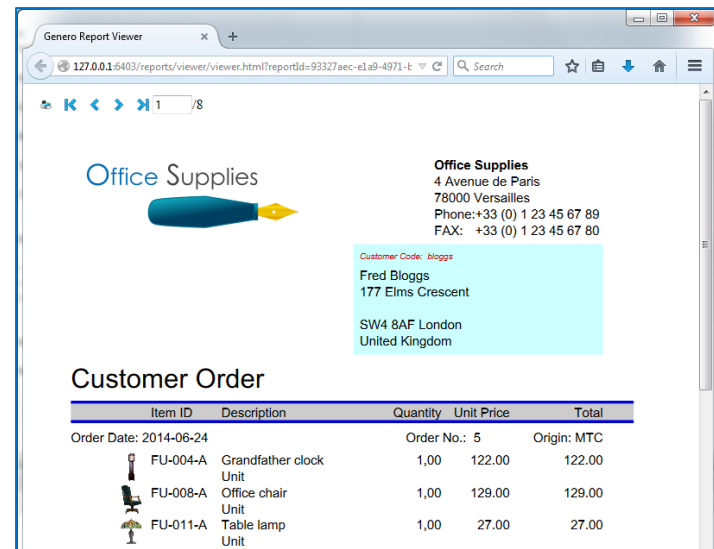
```
C:\fjs\grs\3.00.00-build143282-NB>greWrt -a info license
License       : 
Product      : Four Js Genero Report Writer
Type         : Runtime version
CPU(s)       : 4
End of maintenance date: 2011-12-31 (Year/Month/Day).

C:\fjs\grs\3.00.00-build143282-NB>
```


- Genero Report Designer is included in the Genero Report Studio installation.
- A standalone designer is also provided with the release of Genero Report Designer



- For SVG files:
 - Use Genero Report Viewer included in Genero Desktop Client
 - Use default Web browser to show the report with Genero Web Viewer



- For PDF files
 - Uses default application associated for files of .pdf extension
 - Your application should offer the end user a means of downloading and installing a suitable application
- For Image files
 - Uses default application associated for files of .jpg extension

- For XLS/XLSX files
 - Uses default application associated for files of .xls and .xlsx extensions
 - We recommend to ensure MS Excel is installed on the Client
- For RTF files
 - Uses default application associated for files of .rtf extension
 - We recommend to ensure MS Word is installed on the Client

- For HTML files
 - Uses default browser associated for files of .html extension

- In `$GREDIR/bin`, three scripts
 - `fontinfo` – lists fonts available on Server
 - `fontinfopdf` – lists fonts available on Server for inclusion in PDF documents
 - `printerinfo` – lists printers available for direct printing
 - GRE prints direct from the back-end Server
 - Genero Web Viewer, your PDF Viewer, your Image viewer... print from the front-end Client

- Genero Report Writer documentation is a subset of the Genero Report Studio documentation
- Accessing online help
 - Help button in toolbar
 - F1 key
 - Start >> All Programs >> Genero Report Studio >> Genero Report Studio Help



- Install Genero Report Studio on your Windows PC
- Install the license
 - Use the graphical licensing application
 - A License Number is provided for each installation
- Check the default GRS configuration
 - Tools >> Genero Configurations
- Open the demo application and compile and run it
 - Documents >> My Genero Report Studio Files >> samples >> Reports >> OrderReportJava >> OrderReportJava.4pw
 - Rebuild the whole project
 - Execute the ‘OrderReportJava’ application